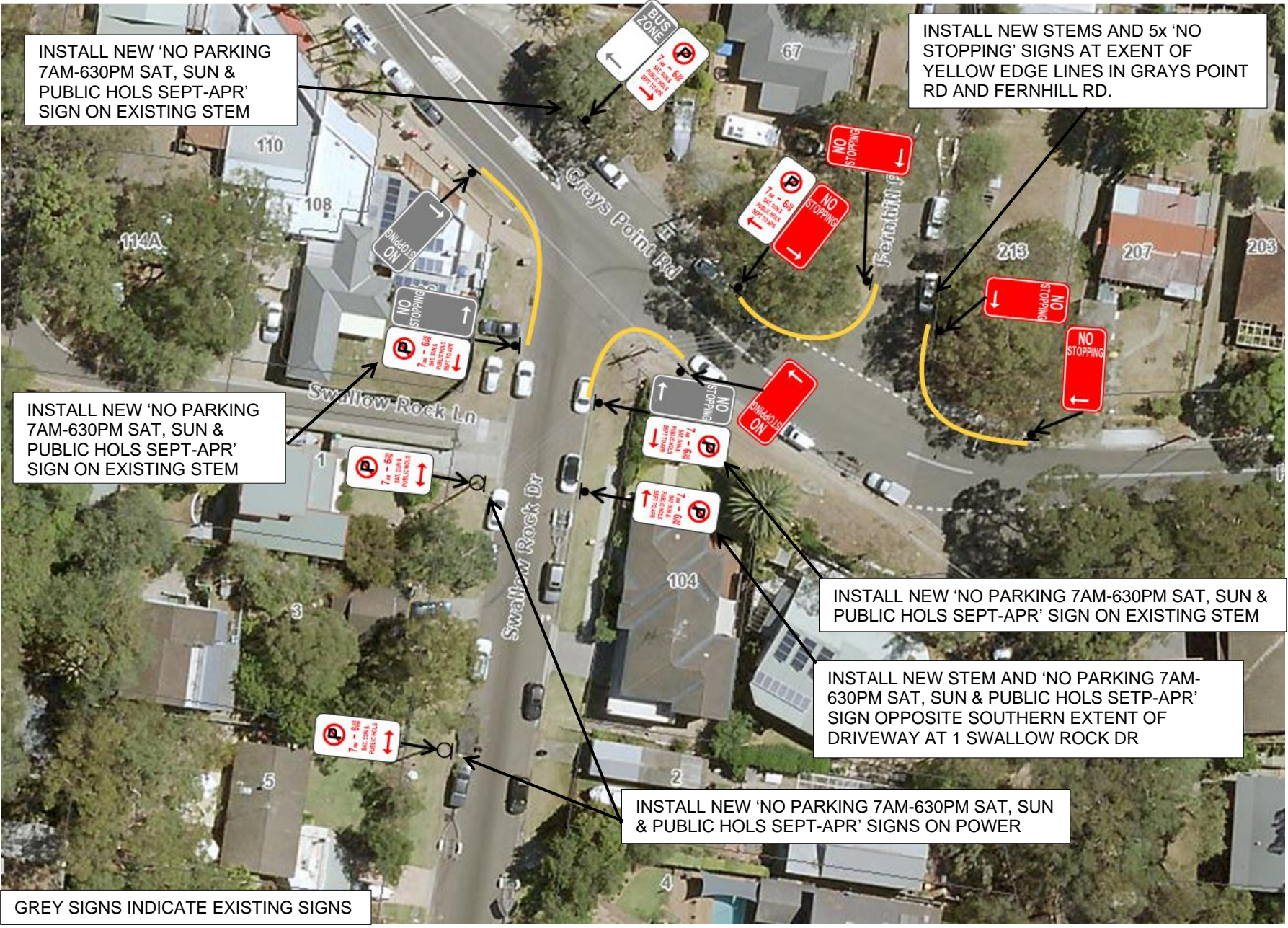
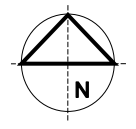


**SWALLOW ROCK DRIVE, GRAYS POINT  
PROPOSED 'NO PARKING' SIGNS**

**PLAN A**



INSTALL NEW 'NO PARKING 7AM-630PM SAT, SUN & PUBLIC HOLDS SEPT-APR' SIGN ON EXISTING STEM

INSTALL NEW STEMS AND 5x 'NO STOPPING' SIGNS AT EXENT OF YELLOW EDGE LINES IN GRAYS POINT RD AND FERNHILL RD.

INSTALL NEW 'NO PARKING 7AM-630PM SAT, SUN & PUBLIC HOLDS SEPT-APR' SIGN ON EXISTING STEM

INSTALL NEW 'NO PARKING 7AM-630PM SAT, SUN & PUBLIC HOLDS SEPT-APR' SIGN ON EXISTING STEM

INSTALL NEW STEM AND 'NO PARKING 7AM-630PM SAT, SUN & PUBLIC HOLDS SEPT-APR' SIGN OPPOSITE SOUTHERN EXTENT OF DRIVEWAY AT 1 SWALLOW ROCK DR

INSTALL NEW 'NO PARKING 7AM-630PM SAT, SUN & PUBLIC HOLDS SEPT-APR' SIGNS ON POWER

GREY SIGNS INDICATE EXISTING SIGNS



REMOVE EXISTING 'NO PARKING' SIGN IN THIS VICINITY.

INSTALL NEW 'NO PARKING 7AM-630PM SAT, SUN & PUBLIC HOLDS SEPT TO APR' SIGNS ON POWER POLES

GREY SIGNS INDICATE EXISTING SIGNS



INSTALL NEW 'NO PARKING 7AM-630PM SAT, SUN & PUBLIC HOLS SEPT-APR' SIGNS ON

INSTALL NEW 'NO PARKING 7AM-630PM SAT, SUN & PUBLIC HOLS SEPT-APR' SIGN ON POWER POLE.

GREY SIGNS INDICATE EXISTING SIGNS